

# B10 2.0W LED FILAMENT

## SPECIFICATIONS & TECHNICAL DATA

The 120V EmeryAllen B10 retrofit lamp is an energy efficient alternative to incandescent E12 base lamps. It offers similar light output to a 120V, 15W incandescent (200lm) and is suitable for use in most 120V E12 fixtures.

<b>Base Type</b>	E12
<b>Material</b>	Glass + Aluminum
<b>Input Voltage</b>	100-130V AC
<b>Wattage</b>	1.8
<b>Volt-Amperes (VA)</b>	2.25
<b>CRI</b>	93.8
<b>Brightness</b>	225 lumens
<b>Lumens/Watt</b>	125
<b>Color Temperature</b>	2700K & 3000K
<b>R9</b>	59
<b>Halogen Equivalent</b>	15W
<b>Beam Angle</b>	360 degrees
<b>Life</b>	15,000 hours
<b>Warranty</b>	Limited Lifetime*

### Available Models:

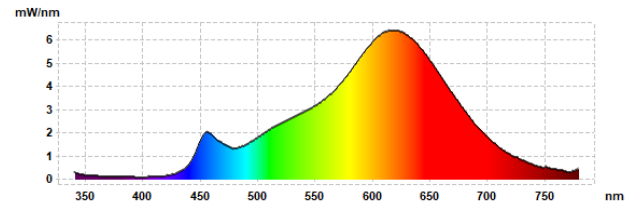
- EA-B10-2.0W-E12-2790-D (2700K)
- EA-B10-2.0W-E12-3090-D (3000K)

### Dimming:

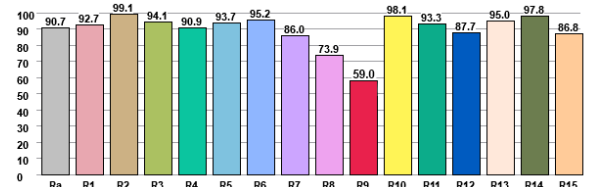
Dimmable with most incandescent and LED dimmers.



## SPECTRAL DISTRIBUTION



## CRI VALUES R1-R15



## TM30 VECTOR

